

# AP-VAC50

## IP Video Door Phone

High Performance IP Video Door Phone Solution

Interworking with Legacy PBX



AP-VAC50

**AddPac**

**AddPac Technology**

Sales and Marketing

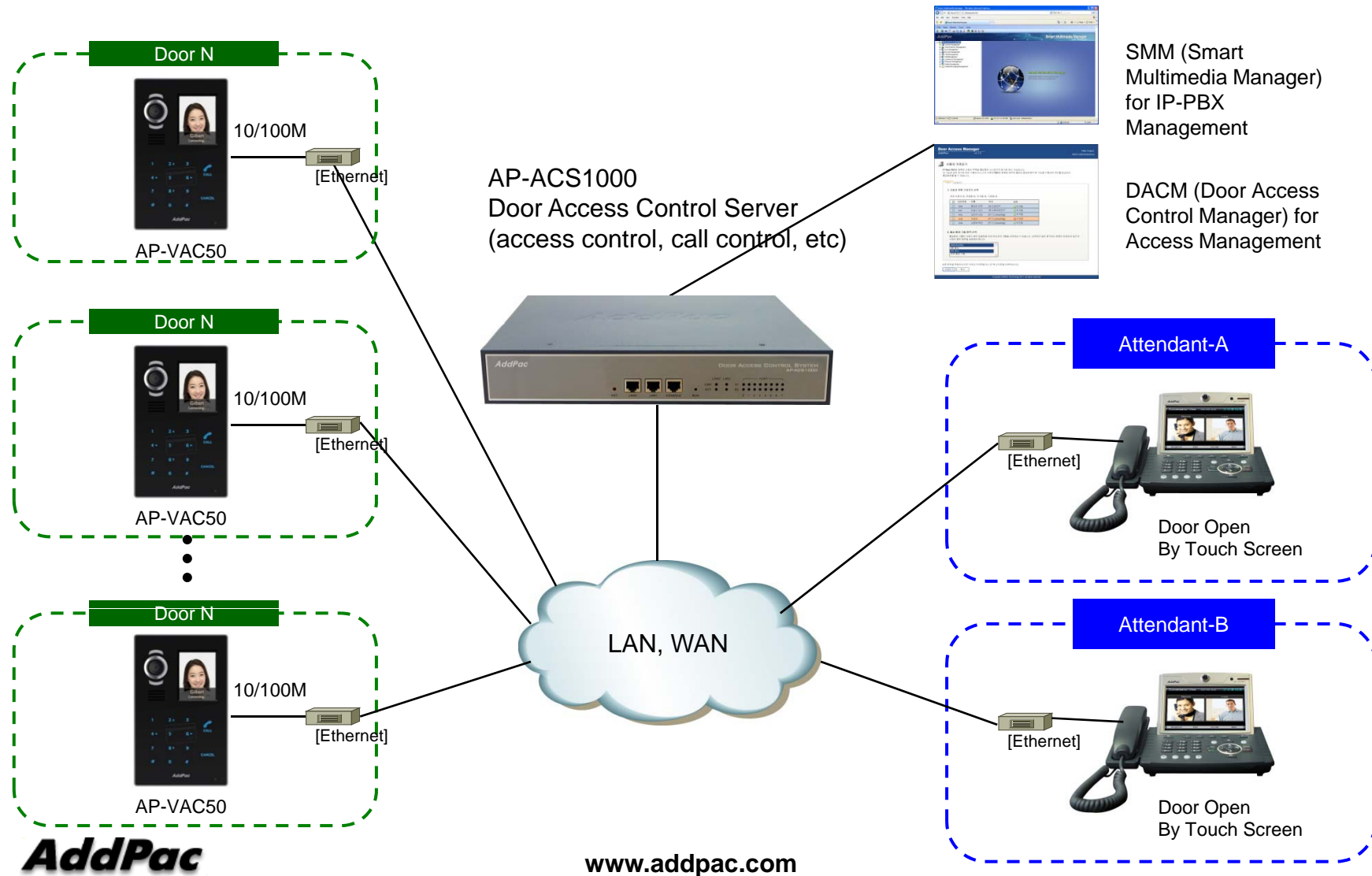
# Contents

- AP-VAC50 Network Diagram
  - All IP Environment
  - Legacy PBX Environment
- AP1800 VoIP Gateway for Legacy PBX Interworking



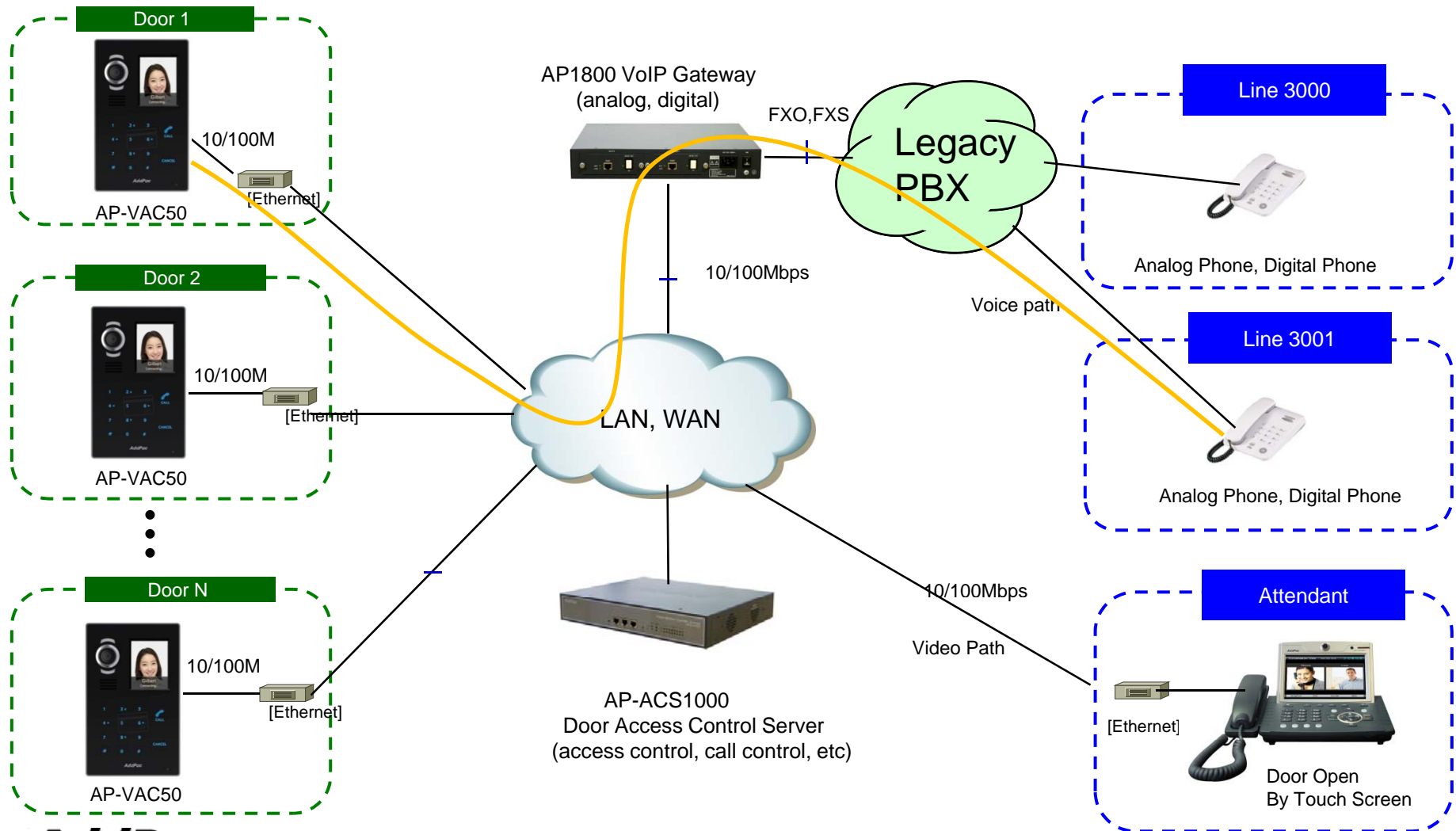
# Network Diagram

All IP Environment



# Network Diagram

## Legacy PBX Environment



**AddPac**

[www.addpac.com](http://www.addpac.com)



# AP1800 VoIP Gateway

# Product Overview

## AP1800 Analog/Digital VoIP Gateway

- H.323/SIP/MGCP Triple Concurrent Stack Embedded
- High Performance RISC & Programmable DSP Architecture
- Analog/Digital VoIP Gateway Solution
- Various Analog Interface Support : FXS, FXO, E&M
- Digital E1/T1 Interface Support : ISDN-PRI, MFCR2, etc
- Two(2) 10/100Mbps Fast Ethernet (IP Share ,etc)
- High Performance LAN-to-LAN Routing Capability
- G.711/G.726/G.723/G.729, T.38 Fax , VAD, etc
- Powerful Network Protocols (PPPoE, DHCP, Static Routing, etc)
- Firmware Upgradeable Architecture
- VPMS (VoIP Plug&Play Management System) for Large Scale Deployment
- Advanced Voice QoS Mechanism
- Light and Compact Design with Internal Power Supply
- Two(2) VoIP Module Slot
- Hot-Swap Function Support

# Hardware Specification

AP1800 Analog/Digital VoIP Gateway

RISC  
CPU

High-end  
DSP

- RISC Microprocessor Computing Power
- Up to 16 Port Analog VoIP Gateway
- Two(2) VoIP Module Slots (Hot-Swap)
  - 8-Port FXS Card, 8-Port FXO Card, 4-Port FXS 4-Port FXO Card , Digital E1/T1 Card
- Network Interface
  - Two(2) 10/100Mbps Fast Ethernet (RJ45)
- RS232C Console Interface
- Run LED, LAN LED, Port LEDs
- Internal Power Supply

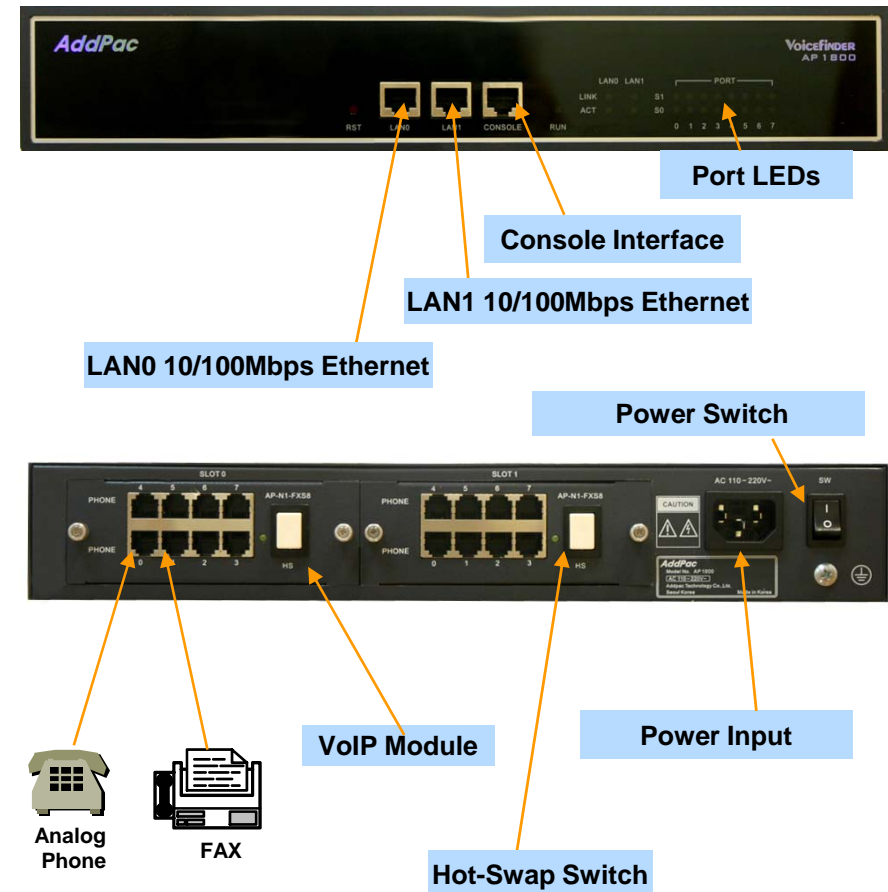
# Hardware Specification

## AP1800 Analog/Digital VoIP Gateway

### Hardware Specifications

AP1800 VoIP Series	Basic Specifications
Voice Interface	Two(2) VoIP Module Slots AP-N1-FXS8, AP-N1-FXO8, AP-N1-FXS4O4, AP-N1-E1, etc
Ethernet Interface	2-Ports 10/100Mbps Ethernet Interface(RJ-45)
Flash Memory	4Mbyte High-speed Flash Memory
Base Memory	32 Mbyte High-speed SDRAM
Power Requirement	Power Supply Adaptor / VAC 110~220V, 50/60Hz,
Operating Temperature	0°C ~ 45°C (32 °F ~ 122°F)
Storage Temperature	-40°C ~ 85°C (-40°C ~ 185°F)
Relative Humidity	5% ~ 95% (Non-condensing)

### Network interface Configurations







# Thank you!

**AddPac Technology Co., Ltd.**  
Sales and Marketing

Phone +82.2.568.3848 (KOREA)

FAX +82.2.568.3847 (KOREA)

E-mail [sales@addpac.com](mailto:sales@addpac.com)